



Authorized Dealer



Zach Ward, VP of Sales
VIA Energy Solutions, LLC
zward@viaenergysolutions.com
Mobile: (281) 851-2322
Work: (346) 326-5737

The Best Experience The Electric Experience

50x faster connection and 100% uptime

Self-Reliant Communication

- Supports all smart functionality
- No cellular or WiFi dependency to a central server
- No IT infrastructure cost or upgrades
- Zero downtime
- Portfolio dashboard management

Dynamic Power Optimization

- Accommodates 3X more chargers
- Avoid expensive electrical upgrades
- Industry-leading safety and performance



5-YEAR STD. WARRANTY



Smart Functionality

- Payments
- Revenue Share
- Station Availability
- Remote Access
- Diagnostics
- Maintenance
- Dashboard Reporting
- Parking Enforcement
- Demand Response
- Load Management



Xeal's Electric Vehicle Solutions

Xeal is a technology-first electric vehicle (EV) charging company operating at the intersection of mobility, real estate, IoT, and energy. We are building the next generation of EV solutions.

The Electric Vehicle Market Landscape

The electric vehicle market is entering a rapidly transformational phase that analysts are referring to as the modern day “industrial revolution”. Electric vehicle sales are doubling year-over-year ([Electrek](#)) and now millions of EV’s are being produced across every major auto company (ie. Audi, Porsche, BMW, Ford, GM, VW, Mercedes, etc.) to expand from **less than 20 EV models** in 2019 to **500+ EV models** ([Business Standard](#)). EV’s are becoming the next must-have gadget, or ‘computer on wheels’, that consumers are obsessing over, especially as they become more engaged with how their choices impact the environment. In an October 2021 Forbes survey, 23% of Americans - or **78 million people** - are considering an electric vehicle as their next car with “protecting the environment” being the leading motivating factor ([Forbes](#)). Additionally, 51% of all new car sales will be electric by 2030 ([New York Times](#)). This confluence of supply and demand is requiring the places where people live and work to be ready to fuel these vehicles before they arrive.

According to the Census Bureau and US Department of Housing and Urban Development, **20%** of American households live in a multifamily rental property ([National Association of Home Builders](#)). Of these apartment renters, nearly three-quarters are “interested or would not rent” properties without green initiatives like EV charging. This means renters are now actively looking for communities that provide electric vehicle chargers and willing to pay a premium for access ([Multifamily Executive](#)).

0.5%

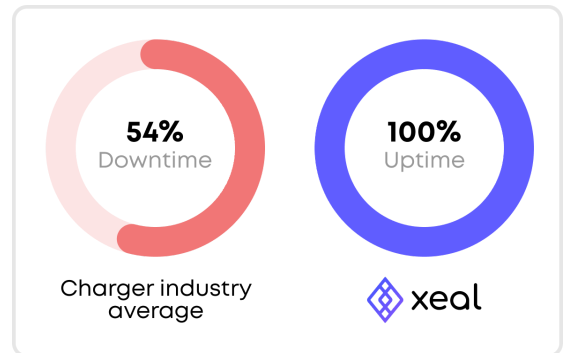
of Commercial Real Estate properties **offer** EV Charging

51%+

of new vehicles sold **will be electric** by 2030

The Xeal Difference

- Self-reliant chargers for 100% uptime
- Dynamic Load Optimization
- On-demand charging for drivers



100% Uptime with Self-Reliant Connectivity

One of the main drivers for electric vehicle adoption is the ease of operation ([Multidisciplinary Publishing Institute](#)). EV drivers expect their ability to charge to be seamless and consistent. However, this is usually not always the case. In a recent US survey, 54% of drivers reported chargers being non-functional ([Plug In America](#)). 95% of non-functional chargers are driven by connectivity failure. Xeal has solved this issue head on with a brand new self-reliant connectivity protocol that offers EV drivers 100% uptime with a frictionless tap-to-charge experience. While every EV charger solution on the market requires expensive IT infrastructure and recurring network fees, Xeal's patent-pending technology eliminates the IT element entirely with a more cost-effective solution.



About 75 to 90 percent of EV charger companies' software costs are driven by cellular network costs (i.e. paying AT&T which gets passed on to the building owner in subscription fees) ([The Hidden Costs of Delivering IoT Services](#)). By removing this cost entirely, Xeal's **solution offers \$0 network fees and \$0 IT Capex** while offering ancillary revenue to boost net operating income.



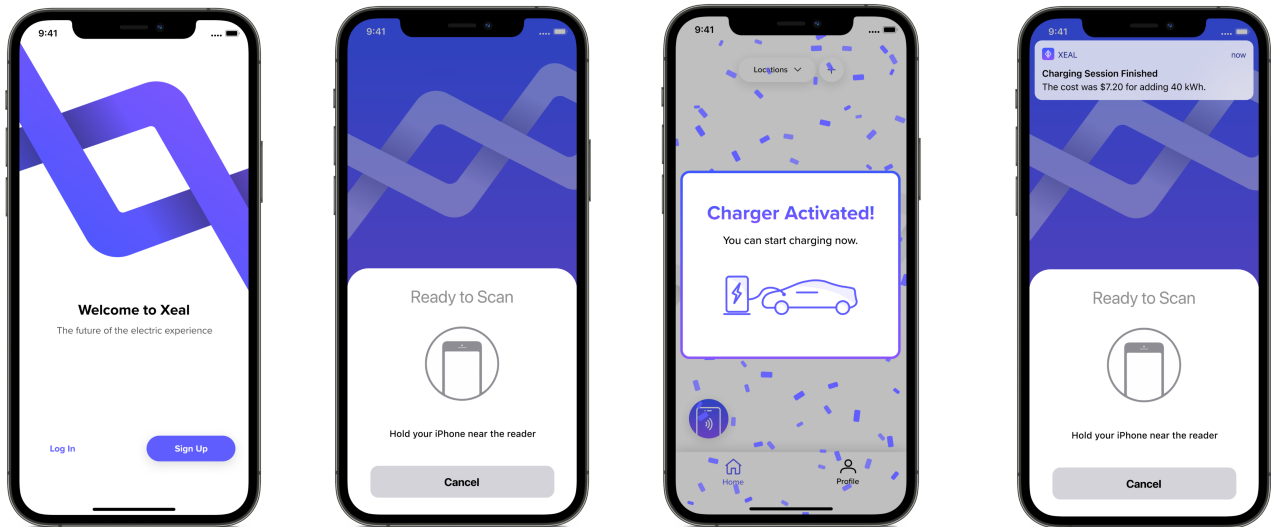
4x More Chargers with the Same Electrical Capacity

Xeal's dynamic power optimization solution fits 4x more charging stations than alternative solutions while reducing infrastructure costs and upgrades by allowing more EV charging access points on the same power supply. This means, where a typical power supply can support 5 EV chargers, Xeal's dynamic power management solution can support 20 Xeal chargers. The additional Xeal chargers simultaneously increases charging access while reducing competition for parking spaces.

Authorized Dealer

The Xeal Driver App: Fast, Simple, Reliable

Xeal's sleek driver app delivers a fast and seamless charging experience for drivers. The driver only needs to open the app once to create an account. Afterwards, they can simply tap their phone to the charger and the reader automatically pops up to authenticate the session. No connection needed, no lag, no downtime. A simple 'tap, charge, go' with Xeal's patent-pending closed loop system.



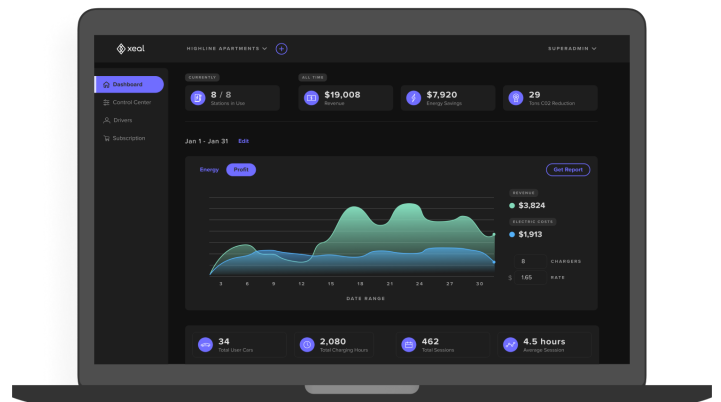
The Xeal Dashboard

The Xeal dashboard is where you can see charger activity, revenue, and create reports.

Features of the Xeal dashboard include:

- CO2 Reductions
- Driver Profiles
- Access Controls
- Private vs Public Chargers
- One-click printable reports to share with leadership
- Revenue

Automatic cashouts directly to your bank account quarterly, or Manually cashout whenever you'd like!

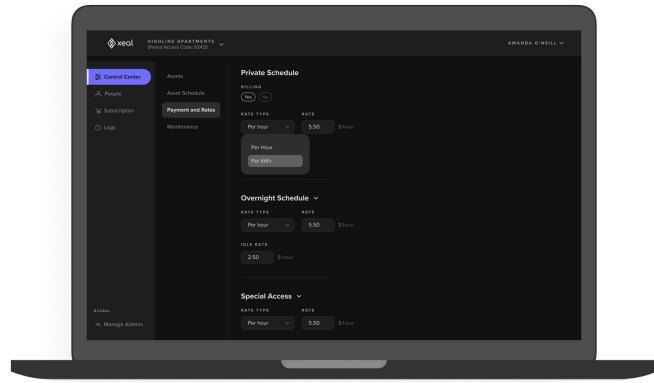


Authorized Dealer



The Xeal Process

- Turnkey charging solution
- Dedicated account manager
- Rebate and incentive service
- Dashboard with key metrics



Xeal offers a first-in-class experience for property owners and managers. Its streamlined process provides a dedicated account manager to understand your EV charger design, budget, timeline, and purpose. Its experienced field operations team works with you and our installation partners to design an optimal EV charger project tailored to each property. The Xeal experience also ensures you receive maximum market incentives for purchase and installation of Xeal chargers.

After installation, your Xeal account manager works with you to establish a custom pricing strategy. When your Xeal chargers are up and running, the account manager regularly touches base to make sure your Xeal EV charger project is automated and fully optimized.

Timeline	Xeal Team	Description
Pre-Installation	Account Manager	Assigned to understand EV charger design, budget, and timeline
	Site Developer	Works with your property manager and our installation partners to design an optimal charger solution. By using a two-step design process, we streamline and expedite the design and budgeting approval process while also offering you more control of the final design of your EV charger system
	Account Manager	Provides an EV charger design report, which includes a complete design, cost recovery, and revenue strategy for you to share with your company partners and stakeholders
Installation	Site Developer	Leads the installation process by coordinating with installers and property manager
	Account Manager	Works with you and your team for onboarding, access control, revenue, custom reports, and service schedule design.
Ongoing Service	Rebate Manager	Leads qualifying incentive applications, tracks progress, and ensures delivery of incentives, i.e. rebate, tax credit, etc.
	Account Manager	Check in after the first month, six months, and annually to ensure EV charger project is automated, right-sized, and fully maximized.

Authorized Dealer





Product Book

Authorized Dealer



Zach Ward, VP of Sales
VIA Energy Solutions, LLC
zward@viaenergysolutions.com
Mobile: (281) 851-2322
Work: (346) 326-5737

Xeal 32A Level 2 EV Charger

Product Code: A10L-25J1-3-X

Authorized Dealer



HIGHLIGHTS

Universal level 2 charger compatible with all EVs. Sleek design and configurable for indoor and outdoor use

Automate revenue share model, accurate energy metering, dynamic access control, and over-the-air updates

Apollo Connectivity: remotely control station with no cellular/WiFi dependence and \$0 recurring network fees

Simple 'Tap-to-Charge' for drivers with 100% reliability and seamless charging experience

Data reporting, monitoring, customized control, and user management via building portal

FEATURES

Power: 32A Continuous Rated
(7.7 kW Max, Optional 24A/16A/8A)

208/240 VAC input

Dimensions: 19.7"L x 8.9"W x 5.3"D
(500 x 226 x 135 mm)

Cable: 25 ft. (7.6m)

Mounting Type:

- Wall Mount
- Pedestal, Single Mount
- Pedestal, Dual Mount



Xeal 64A Level 2 EV Charger

Product Code: A10L-25J1-6-X

Authorized Dealer



HIGHLIGHTS

Universal level 2 charger compatible with all EVs. Sleek design and configurable for indoor and outdoor use

Automate revenue share model, accurate energy metering, dynamic access control, and over-the-air updates

Apollo Connectivity: remotely control station with no cellular/WiFi dependence and \$0 recurring network fees

Simple 'Tap-to-Charge' for drivers with 100% reliability and seamless charging experience

Data reporting, monitoring, customized control, and user management via building portal

FEATURES

Power: 64A Continuous Rated
(15.4 kW Max, Optional 32A/24A/16A)

208/240 VAC input

Dimensions: 19.7"L x 8.9"W x 5.3"D
(500 x 226 x 135 mm)

Cable: 25 ft. (7.6m)

Mounting Type:

- Wall Mount
- Pedestal, Single Mount
- Pedestal, Dual Mount



Xeal 32A EV Charger Mounting Options

Ground Pedestal: Dual-Mount

Product Code: A10P-CR

Ground-mounted pedestal, operates as a single or dual-mount pedestal

Slim, modern profile enhances property aesthetics and enables easy identification of EV Chargers

Compliant with ADA height & reach standards. Compatible with the Xeal 32A Single Port Charger

Dimensions: 44.0”L x 10.2”W x 7.5”D
(111.8 x 25.9 x 19.1 cm)

Weight: 33 lbs



Wall Mount Cable Management Retractor

Product Code: A15A-CM

Wall mount retractor that keeps cables off the ground and vehicle connectors protected

Available in single charger configuration and standalone without needing a Ground Pedestal

Dimensions: 6.3”L x 4.5”W x 5.9”D
(16.0 x 11.4 x 15.0 cm)

Weight: 9 lbs



Authorized Dealer



Dual Mount Pedestal with Cable Management (32A & 64A Compatible)

Product Code: B10P-DCMH

HIGHLIGHTS

Ground-mounted pedestal, operates as a single or dual-mount pedestal

Durable, Attractive, modern profile enhances property aesthetics and enables easy identification of EV Chargers

Compliant with ADA height & reach standards. Compatible with the Xeal 32A Single Port Charger

Cable Management solution to avoid cable floor drag

FEATURES

Design: Sleek design and configurable for indoor or outdoor use

Product Weight: 69.1kg (152.3 lbs)

Dimensions: 710mm W x 165mm D x 2163 H (28" W x 6.5" D x 85" H)

Cable System: Adjustable tension for precision retracting experience

Warranty: One Year

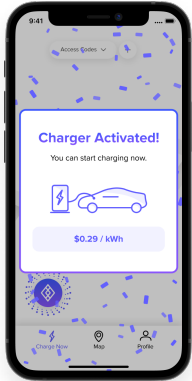


Authorized Dealer

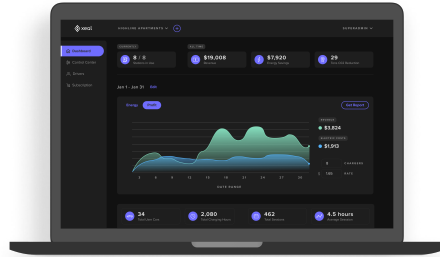




Authorized Dealer



DRIVER APP



BUILDING OWNER PORTAL



WALL MOUNT



PEDESTAL

Key Features

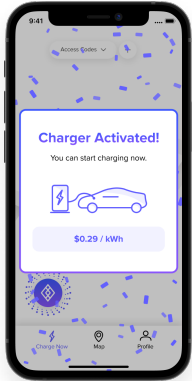
Design	Sleek design and configurable for indoor and outdoor use
Charging Speed	Universal level 2 charger is compatible with all electric vehicles and charges up to 3X faster
Dashboard	Accurate energy metering, dynamic access control, over-the-air updates, and automated revenue share model
Dynamic Power Optimization	Optimizes the power delivered to chargers, even if the panels or breakers are oversubscribed, without relying on a cloud-based management system.
Future-Proof Connectivity	Apollo Protocol allows remote control with no IT capex and no internet dependence to a central server needed to operate
Easy Install	Building-integrated power management with no electrical upgrades
Driver Mobile App	Seamless 'Tap-to-Charge' experience with 50X faster connection and 100% uptime
Reporting	Data reporting, monitoring, customized control, and user management via building portal

Technical Specifications

Charging Power	32 Amp (7.7 kW max)	Installation	Hardwired (3 foot service whip protected)
Product Dimensions	19.7"L x 8.9"W x 5.3"D	Vehicle Connector Type	Over-molded SAE J1772 Connector
Product Weight	13.5 lbs	Accessories Included	SAE J1772 Connector Holster (wall mount)
Supply Circuit	208/240V, 40A	Environment Rating	Indoor/Outdoor rated
Warranty	5 years	Operating Temperature	-22°F to 122°F (-30°C to +50°C)
Charge Cable Length	25 feet	Certifications	UL, ETL, cETL, ENERGY STAR®, OpenADR, LEED, OCPP 1.6J
Enclosure	Fully Sealed NEMA 4	Country of Origin	United States of America
Connectivity	NFC / BLE / Wi-Fi		



Authorized Dealer



DRIVER APP



BUILDING OWNER PORTAL



WALL MOUNT



DUAL PEDESTAL

Key Features

Design	Sleek design and configurable for indoor and outdoor use
Charging Speed	Universal level 2 charger is compatible with all electric vehicles and charges up to 3X faster
Dashboard	Accurate energy metering, dynamic access control, over-the-air updates, and automated revenue share model
Dynamic Power Optimization	Optimizes the power delivered to chargers, even if the panels or breakers are oversubscribed, without relying on a cloud-based management system.
Future-Proof Connectivity	Apollo Protocol allows remote control with no IT capex and no internet dependence to a central server needed to operate
Easy Install	Building-integrated power management with no electrical upgrades
Driver Mobile App	Seamless 'Tap-to-Charge' experience with 50X faster connection and 100% uptime
Reporting	Data reporting, monitoring, customized control, and user management via building portal

Technical Specifications

Charging Power	64 Amp (15.4 kW max)	Installation	Hardwired (3 foot service whip protected)
Product Dimensions	19.7"L x 8.9"W x 5.3"D	Vehicle Connector Type	Over-molded SAE J1772 Connector
Product Weight	27 lbs	Accessories Included	SAE J1772 Connector Holster (wall mount)
Supply Circuit	208/240V, 80A	Environment Rating	Indoor/Outdoor rated
Warranty	5 years	Operating Temperature	-22°F to 122°F (-30°C to +50°C)
Charge Cable Length	25 feet	Certifications	UL, ETL, cETL, ENERGY STAR®, OpenADR, LEED
Enclosure	Fully Sealed NEMA 4	Country of Origin	United States of America
Connectivity	Apollo Protocol		